

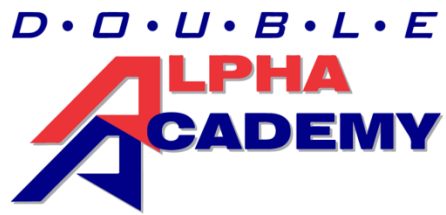


**2017 ITALIAN IDPA
NATIONAL CHAMPIONSHIP**

MATCH BOOK

SPONSORS





2017 ITALIAN IDPA NATIONAL CHAMPIONSHIP

WELCOME TO THE 2017 ITALIAN IDPA NATIONAL CHAMPIONSHIP

Your Match Directors and the whole Staff would like to welcome you at the 2017 IDPA Italian National Championship. Thank you for having decided to attend this Match where 290 between Italian and foreign shooters will compete the largest IDPA Italian Match ever!

We will do our best for the match to be as fun as possible. For this reason we have written this Briefing with many useful information for those who will be shooting the match on Saturday and Sunday.

Minimum rounds for the match is: 170 + 7 for the Chrono Test. We suggest to bring 200 rounds. It is possible to purchase ammunitions at the range.

CHECK-IN

Check-In will be done below a large awning in front of the range's Bar – Lounge and the check-in will proceed as follow:

- **personal data verify;**
- **eventual match fee payment;**
- **gadgets raffle and minor participation awards;**
- **official match t-shirts pickup (size change will not be possible);**
- **transcript of the personal firearm carry or transportation permit;**
- **range access badge pickup.**

Shooters competing on Saturday or Sunday will be allowed to proceed with the check-in on Friday evening between 5:30 PM and 18.30 PM but will not be allowed to access the shooting bays on Friday.

The Check-In process will start Saturday morning from 08:30 AM until 09:15AM, on Saturday evening between 05:30 PM and 06:30 PM. The deadline for the Check-In will be Sunday morning between 07:30 AM and 08:15 AM. Access to the shooting bays will be allowed to competitors only, guests and spectators are allowed in the visitors area only.

Equipment check and chrono test will be done during the match.

Equipment check could be done after the Check-In but before the match start on Friday evening, Saturday morning, Saturday evening and Sunday morning.

We suggest the shooters arriving at the range the day before the match to proceed with the Check-In (gadgets and t-shirt pickup) and the equipment check the evening before the match.

If, for any reason, a competitor has any doubt about his/her equipment to be IDPA legal, he/she will be allowed to request a verify before the match start during the equipment check.

Changes of Squad or Division are not allowed.

Other than the Bar – Lounge at the entrance of the Club, you will be able to buy food and beverages at the shooting bays entrance during the mid of the match. In case of high air temperature we suggest you to bring beverages at the shooting bays before the start of the match.

Toilets will be available at the Bar – Lounge and at the shooting bays entrance.

RULES AND PROCEDURES

COLD RANGE:

The Shooting Range is a “Cold Range”. For this reason no shooters are allowed to carry a loaded firearm if not under the supervision and range commands of a Safety Officer.

If you have a Concealed Carry Permit and you’ll reach the range with a loaded and holstered firearm, you’ll need to immediately request a Safety Officer to follow you while unloading and securing the firearm before to access the shooting bays.

Firearms cannot be handled or unholstered for any reason when outside the dedicated Safe Areas or inside the shooting bays without the direct supervision of a Safety Officer.

Violating the above range rules will become an immediate DQ from the match.

Dropping a firearm inside a bay will become a DQ from the match, a dropped firearm outside the shooting bays will not become a DQ but a Safety Officer is required to pick up the firearm and to secure it.

MUZZLE SAFETY:

Muzzle vertical elevation limits are the front and side berms height.

Horizontal muzzle limit is 180° rule with no exceptions.

RANGE RULES:

A badge to access the bays during the match day (only) will be provided to all the shooters during the Check-In. **The badge must be returned at the end of the match.**

No other shooters are allowed to access the bays if they are not competitors of the match. The range is delimited in two areas by a metallic fence. A shooters (competitors) area and a guests/spectators area immediately behind.

Competitors will access the bays area only during their match day. To move between the bays they will use an hallway beside a metallic fence that is made to delimiting the shooters area and the guests/spectators area. The other front corridor is restricted to the Match Staff only.

Boundaries of all the stages will be delimited with a colored ribbon and will be marked with a numbered sign and the related CoF diagram.

STAGE RESET:

It is a shooter’s responsibility to help the Staff while resetting the stage.

During this competition, in order to avoid individual walk-through and to equally ease all the shooters to help in resetting the stages, this specific procedure will be adopted:

The first two stage reset turns will be done by the last two shooting competitors of the squad list. Following, by rotation, the last two shooters who have already shot the stage will be replacing them, this way any single shooter will take part to reset the stage at least two times. No other shooters are allowed inside the stage during resetting. The resetting of any reactive target mechanism will be done by the designated Safety Officer.

We wish to reiterate that no shooters are allowed inside a stage other than those who have already completed the CoF with the exception of the first two who will be following their resetting turn as described above.

GUESTS AND SPECTATORS:

Guests and spectators are welcome, but they will need to respect the range's rules about the restricted areas and they will must be wearing eyes and hear protections for the entire duration of the match. Childs and minors must be under the responsibility of an adult.

GADGETS AND RAFFLE

There will be two separate raffles.

During the check-in every competitor will participate to a raffle for a minor prizes or gadgets. At the end of the match, before the awards ceremony, there will be a final raffle for higher value participation prizes. The two raffles are to be intended as separated and all shooters will take part to both.

All the participants will be eligible to pick up a gadget at the Brownells exposition stand that will be kindly provided by the Company. Gadgets will be distributed by the Brownells representatives while checking the participants names list.

APPEALS AND PROTESTS:

We beg the shooters to respect the IDPA Rule book about any eventual appeal/protest while addressing any issue to the Stage CSO for first and later to the MD, if necessary.

Any eventual appeal process will be approved if the related times and required procedures will be respected.

There are no other procedures or persons who can intervene and for this reason we beg to follow this part of the Rule book.

The scores verification period is one hour after the scores will be published starting from Saturday evening until the end of the match.

Scores will also be available online on the www.practiscore.com website.

PCC Division:

The shooter Mirko Mazza has been authorized, for a demonstrative purpose only, to shoot the match in the PCC division. He will do the chrono test and equipment check.

Rules to be respected:

He must wear the cover garment if required by the CoF;

10 rounds for each magazine (same as the SSP-ESP divisions);

Start position facing up range will NOT be allowed;

Start condition with firearm using weak hand only (stage 7, standard count): Firearm will be hold on the weak side at 45° from the ground; trigger will be pulled using the weak hand.

Start condition with firearm on the table will be allowed but focusing on safety.

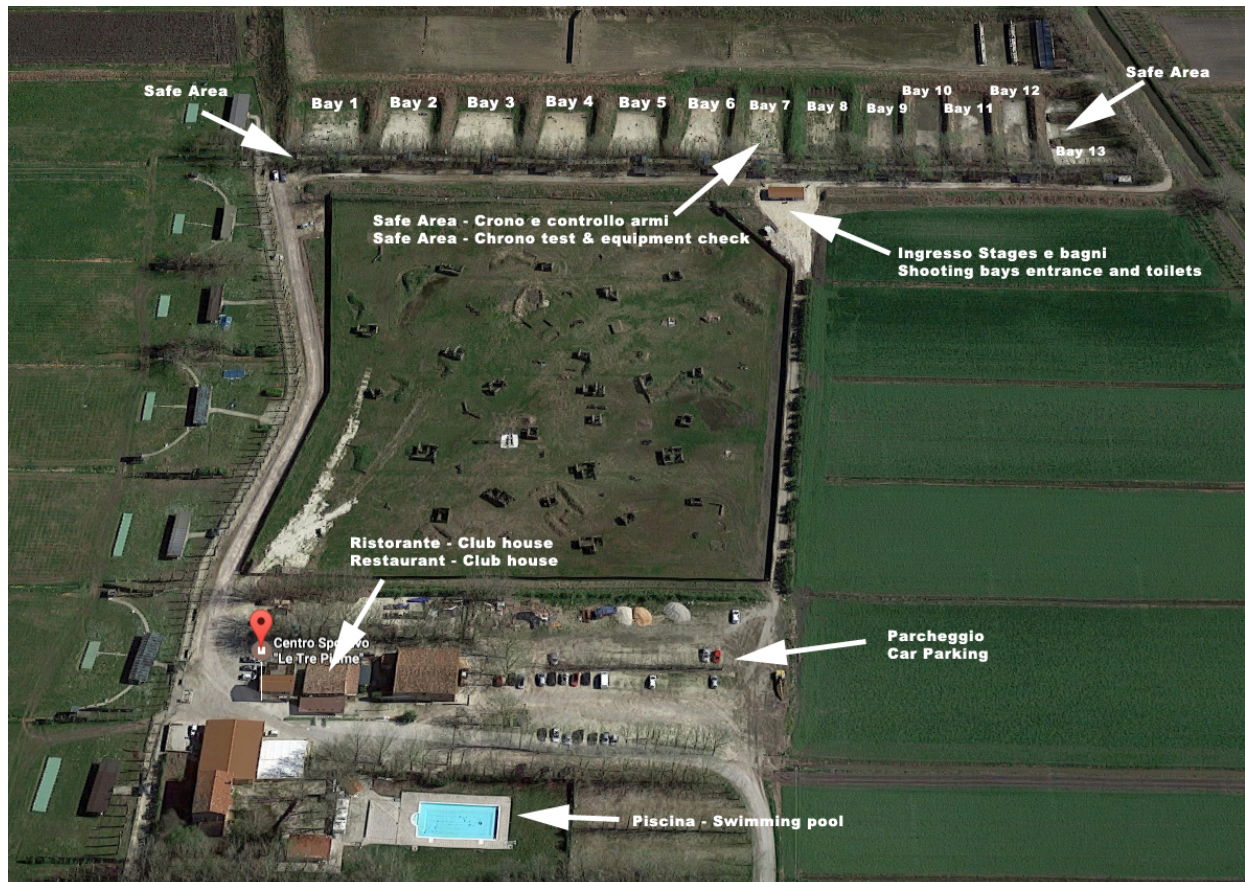
The firearm, when in start position, is required to be hold with both hands. If something different is required by the CoF this will not be allowed for PCC and the shooter will be keeping the firearm in the default position.

In the stage where a suitcase must be hold during the CoF: Shooter will not be able to shoot with a single hand, for this reason he will hold both the suitcase and the firearm during the CoF.

The unloaded firearm must be always carried with a chamber safety flag and in vertical position.

RANGE LAYOUT

For those who are not familiar with the range, we wish to remind that all bays are positioned on a single line. The range is divided in two areas by a metallic fence of about one meter of height: Shooters area and Visitors area.



Bays starting from number 1 to number 6 are matching the related stages. Bay number 7 is dedicated to the chrono test and equipment check. Bay number 8 will host Stage number 7 until bay number 13 that will be hosting Stage number 12.

GPS:



SHOOTERS EVENT CALENDAR

FRIDAY SEPTEMBER 15, 2017

05:30/06:30 PM	SHOOTERS REGISTRATION AND CHECK-IN
05:30/06:30 PM	EQUIPMENT CHECK FOR SATURDAY AND SUNDAY SHOOTERS

SATURDAY SEPTEMBER 16, 2017

08:30/09:15 AM	SHOOTERS REGISTRATION AND CHECK-IN
08:30/09:15 AM	EQUIPMENT CHECK FOR SATURDAY SHOOTERS
09:30/17:00 AM	MAIN MATCH
05:30/06:30 PM	REGISTRATION AND CHECK-IN FOR SUNDAY SHOOTERS
05:30/06:30 PM	EQUIPMENT CHECK FOR SUNDAY SHOOTERS
07:00 PM	STAFF DINNER (Mandatory reservation for shooters and guests)

SUNDAY SEPTEMBER 17, 2017

07:30/08:15 AM	SUNDAY SHOOTERS REGISTRATION AND CHECK-IN
07:30/08:15 AM	EQUIPMENT CHECK
08:30AM /02:30 PM	MAIN MATCH
02:30/03:30 PM	SCORES VERIFICATION PERIOD AND RAFFLE
03:30 PM	AWARD CEREMONY

We suggest the shooters arriving the day before the match to proceed with the check-in and equipment check during the evening to help in speeding up the next morning operations.

During Saturday evening a pork and turkey based spiced dinner has been set up for the match Staff. This dinner is also opened to all shooters and their guests who have requested a reservation for the dinner.

YOUR MATCH DIRECTORS:

Federico Iannelli

Rudy Covre

STAGE SUMMARY

MATCH ROUND COUNT: 170

STAGE	BAY	NAME	ROUNDS
1	1	ASSAULT AT THE VALUABLES WAREHOUSE	16
2	2	IN THE GARDEN	14
3	3	DEFENSE AT THE EMBASSY	14
4	4	PHARMACEUTICAL COMPANY	14
5	5	FIRST DAY OF WORK	15
6	6	TOILET	12
7	8	STANDARD	16
8	9	AT THE STABLES	14
9	10	AIRPORT SECURITY	17
10	11	ANTIQUE DEALER	14
11	12	RETURN TO THE FARM	12
12	13	ASSAULT ON THE BUS	12